



MINUTES OF LIMERICK AND CLARE EDUCATION AND TRAINING BOARD

COVID-19 - LCETB BOARD MEETING WAS CONDUCTED VIA ZOOM AND WAS NOT A FACE TO FACE MEETING

on Tuesday, 21st September, at 4 p.m.

Present: Cllr. Kieran O'Hanlon, Chairperson
Mr. Michael Cregan
Cllr. Michael Donegan
Ms. Elaina Fitzgerald
Cllr. Liam Galvin
Mr. Michael Guilfoyle
Ms. Catherine Hehir
Cllr. Gabriel Keating
Cllr. Joe Killeen
Cllr. Paul Murphy
Mr. Donal ÓhAiniféin
Cllr. Elena Secas
Cllr. John Sheahan
Cllr. Clare Colleran Molloy
Cllr. Ann Norton
Ms. Marian Petty

In attendance: Mr. George O'Callaghan, Chief Executive
Ms. Shelagh Graham, Director of Organisation Support and Development
Mr. Paul Patton, Director of Further Education and Training
Mr. Donncha O'Treasaigh, Director of Schools
Mr. Denis O'Brien, Head of Corporate Services and ICT
Ms. Joanne O'Brien, Recording Secretary, Corporate Services

1. For Consideration; Apologies/Condolences

Apologies: Mr. Sean McMahon
Mr. Mark O'Dea
Cllr. Brigid Teefy
Ms. Sheila Hickey

Condolences:

A Vote of Sympathy was passed to the following:

- Mr. Michael Guilfoyle, Board Member and Staff Member, Colaiste Chiaráin, on the death of his mother, Mrs. Rose Mary Guilfoyle.
- Ms. Kathleen Ryan (Marshal House) on the death of her sister, Ms. Margaret O'Malley.
- Ms. Caroline O'Brien (Marshal House) on the death of her mother, Ms. Mary Curtin.
- Mr. Denis O'Brien (Marshal House) on the death of his father, Mr. Mattie O'Brien.
- Ms. Joanne O'Brien (Marshal House) on the death of her sister, Ms. Mairead Cagney.
- Ms. Ellen Bradley (Marshal House) on the death of her mother, Ms. Elizabeth (Betty) O'Connor.
- Mr. Paul Carey (Marshal House) on the death of his sister, Ms. Mary Keogh.
- Ms. Miriam Gallagher (Marshal House) on the death of her uncle Mick.
- Ms. Bernie Kelleher, (FET), on the death of her father, Mr. Tom O'Connor.
- Mr. Paddy Delaney (LCFE) on the death of his wife, Ms. Marina Delaney.
- Mr. Patrick Hayes (LSOM) on the death of his mother, Ms. Nancy Hayes.
- Mr. Kieran Shaughnessy (Hospitality Campus) on the death of his mother, Ms. Mary Culligan.
- The Family of the late Darren Whelan (past pupil, Colaiste Mhuire, Askeaton).
- Ms. Catriona Tierney, (Marshal House) on the death of her mother, Kathleen.
- Mr. Thomas Downes (FET, Raheen) on the death of his mother, Ms. Theresa Downes.
- Mr. Pat Crowe (LCFE) on the death of his mother, Ms. Mary Crowe.
- Mr. Morgan Rowland on the death of his wife Laura (Clonroad, Ennis)
- Ms. Sheila McDonald (Kilmallock Road Campus) on the death of her father, Mr. Tony McDonald.
- The Family of the late Niall O'Brien (past pupil, Castletroy College).
- Mr. Michael J Ryan (FET, Clonroad) on the death of his brother, Mr. Eugene Ryan.
- Mr. Shane Curtin, Abbeyfeale, on the death of his father.

As a mark of respect on the bereavement of Mr. Michael Guilfoyle's father, the meeting was adjourned for two minutes.

2. Declaration of Conflict of Interests

All Board Members confirmed no conflict of interest with any Agenda item.

3. For Adoption;

Minutes of Meeting of Limerick and Clare Education and Training Board, held on 15th June, 2021, were adopted on the proposal of Cllr. Liam Galvin, seconded by Cllr. Clare Colleran Molloy.

4. For Consideration; Matters arising from the Minutes

The CE advised that the Covid 19 pandemic has brought many challenges to us all. It has reduced the flexibility people have in their everyday activities and lives. This has caused problems for attendance at our LCETB Board meetings. As a result I propose that we invoke Section 36 subsection 7 of the Education and Training Boards Act 2013 which allows us to extend the period of absence from meetings from 6 months to 12 months as Covid 19 and its restrictions may have caused some Members to miss meetings in good faith for a number of reasons. This would mean that a person would be deemed to have resigned if they have missed 12 months of meetings and not 6 months. It was agreed by Members that the 12 months would revert to 6 months following Pandemic. This was unanimously agreed by the Board on the proposal of Cllr. Liam Galvin and seconded by Cllr. Gabriel Keating.

Members also expressed the need to have “In Person” meetings and the Chairperson advised that in line with Government regulations, it is hoped to have the next meeting in person. Cllr. Ann Norton expressed her concern where Board Members have vulnerable family members and the need to attend remotely. The Chief Executive advised that he would consult with the Chairperson and that all options would be pursued.

5. Governance:

a. Business Continuity Plan incorporating COVID-19 Update

The Board was pleased to note that all schools have reopened and going relatively smoothly. No significant outbreaks of Covid and the Chief Executive and Members paid tribute to all involved in the safe reopening of schools and centres. It was also acknowledged the Government supports that are still in place and these resources are of significant help and welcomed.

Further Education and Training facilities are reopening this week with full return where possible and blended where required.

The Chairperson paid tribute also the staff in Marshal House and the outstanding work carried out during the pandemic. In particular, he paid tribute to the staff and their ability to adapt to the changing environment.

The Chief Executive advised that staff were in the process of a staggered return to Head Office and consultation would begin in relation to remote working in coming weeks.

6. Correspondence

Department Correspondence

<u>CL 0033/2021</u> 17 th June, 2021	Re: Arrangements for Inspectorate Engagement with Post-Primary Schools and Centres for Education 2021/2022 School Year.
<u>CL 0034/2021</u> 17 th June, 2021	Re: Updated Entry Criteria for the Gaeltacht Entry route to the (English Medium) Primary Bachelor of Education.
<u>CL 0035/2021</u> 11 th June, 2021	Re: Parent’s Leave Scheme for Special Needs Assistants employed In Recognised Primary and Post Primary Schools
<u>CL 0036/2021</u> 30 th June, 2021	Re: Application of 1st July 2021 FEMPI Pay Restoration of certain grades other than Teachers and SNAs employed by ETBs with salaries of between €70,000 and €150,000.
<u>CL 0037/2021</u> 30 th June, 2021	Re: Building Momentum Agreement 2021 - 2022 Revision of 2011 Entrant Teacher Salaries with effect from 1 March 2021 - Application of Additional Incremental Skips.
<u>CL 0038/2021</u> July, 2021	Re: Home Tuition Grant Scheme 2021/2022.
<u>CL 0039/2021</u> 6 th August, 2021	Re: Extended Breastfeeding Breaks for Special Needs Assistants employed in Recognised Primary and Post Primary Schools.

<u>CL 0040/2021</u> 9 th August, 2021	Re: Partial Return to Work for Special Needs Assistants employed in Recognised Primary and Post Primary Schools.
<u>CL 0041/2021</u> 10 th August, 2021	Re: Fair Processing Notice to explain how the personal data of students in post-primary schools on the Post-Primary Online Database (PPOD) will be recorded, processed and shared.
<u>CL 42/2021</u> 11 th August, 2021	Re: Coronavirus (COVID-19): Arrangements for Teachers and Special Needs Assistants employed in recognised Primary and Post Primary schools.
<u>CL 0043/2021</u> 24 th August, 2021	Re: Coronavirus (COVID-19): Arrangements for Staff other than Teachers and Special Needs Assistants who are employed in ETBs.
<u>CL0045/2021</u> 8th September, 2021	Re: Covid Learning and Support Scheme.

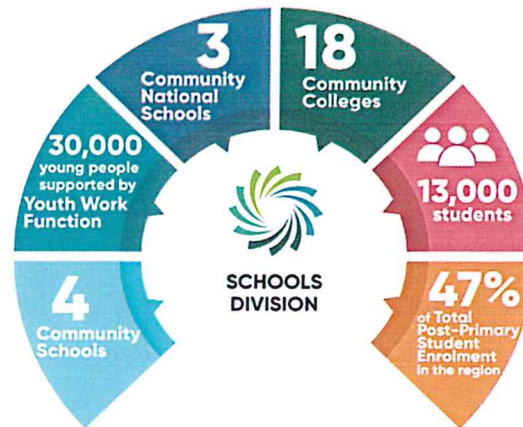
EDUCATION & TRAINING BOARDS IRELAND

6 th September, 2021	Re: ETBI Annual General Meeting scheduled for 30 th September, 2021 at 11am.
	Voting Delegates appointed to attend: Cllr. Clare Colleran Molloy, Cllr. Gabriel Keating, Cllr. Kieran O’Hanlon, Cllr. Joe Killeen and Cllr. John Sheahan.

OTHER CORRESPONDENCE

Limerick and City County Council 17 th July, 2021	Re: Reassigned number for protected structure – Athenaeum Building, Cecil Street, Limerick.
Corporate Procurement Plan	Re: Noted by the Board.

7. For Consideration; Chief Executive's Report Incorporating;



Schools Division

Community National Schools

Glenroe Community National School

Glenroe Community National School (www.glenroecns.ie) opened on 27 August 2021 with twenty-one (21) students. The school is proving to be extremely successful and popular in the local community. Refurbishment works are currently underway in the school building to accommodate the growing pupil population at Glenroe Community National School.

The school applied for and has been selected to offer the Primary Languages Sampler Module as part of the Languages Connect Sampler Module. This initiative will introduce students to a Modern Foreign Language of their choice or Irish Sign Language (ISL).

Mol an Oige CNS

A design team has been appointed to work on the new 8 classroom school building. The new school will be built on a greenfield site adjacent to the town. A new deputy Principal has also been appointed to the school.

Raheen Wood CNS

The tender process for the appointment of a design team for the new school building is underway

Post Primary Schools

Reopening Schools

All principals and Deputy Principals attended a Zoom meeting on 24 August 2021 in preparation for the reopening of all schools at the end of August. Schools received the latest advice and updates in relation to;

1. The Public Health Advice related to reopening of schools provided by the HPSC;
2. Updates to the COVID-19 Response Plans for Primary and Special Schools and Post Primary Schools, in line with the Return to Work Safely Protocol, to be implemented in advance of schools reopening.
3. The Measures to be implemented in Schools to
 - (i) minimise the risk of introduction of infection in our schools
 - (ii) managing risk of spread if introduced through:
 - Regular and good hand hygiene;
 - Good respiratory hygiene and cough etiquette;
 - Enhanced cleaning regimes; and
 - Maintaining physical distancing in the classroom and within schools
4. The suite of Additional Supports available to schools to implement their Covid19 Response Plan and operate in a sustainable way

5. The arrangements to Get Children Safely to our Schools
6. How the Mental Health and Wellbeing of Students and Staff will be supported throughout the re-opening process
7. Guidance on Learning and School Programmes in 2021/22
8. How schools can support those staff and students who cannot attend school for health reasons related to COVID-19 and in the event of a school closure in the future
9. The Communication Arrangements in place to ensure schools, school communities and all stakeholders have clear, relevant and timely information to support the reopening and continued operation of schools; and
10. A summary on what schools will be like when they reopen.

Newly appointed Principals and Deputy Principals

Limerick and Clare Education and Training Board has confirmed the appointment of a new principal, and three deputy principals to three of its schools in Limerick, as well as new principals and deputy principals in three schools in County Clare. The positions in Limerick are in Thomond Community College and Gaelcholáiste Luimnigh in the city, and Coláiste na Trócaire in Rathkeale. The positions in Clare arose from vacancies, following retirements, in St Joseph's Community College, Kilkee, St Anne's Community College, Killaloe, and Ennistymon Vocational School. All appointments will be effective from September 1st.

LCETB thanks all those Principals and Deputy Principals who transitioning for their respective contributions over many years and wish them every success in their retirement. We extend congratulations to our new Principals and Deputy Principals and wish them every possible success and happiness in their roles.

Mentoring

A mentoring programme for all newly appointed principals and deputy principals will commence the programme provides for existing principals and deputy principals working closely with the newly appointed principals and deputy principals.

Leaving Certificate Results

Students across Limerick and Clare Education and Training Board schools performed extremely well in the Leaving Certificate of 2021. Schools have reported that very high numbers of students have been successful in achieving their preferred courses.

Principals and Deputy Principals Meetings

Regular contact with school principals and deputy principals has been on-going since early August 2021 to ensure that schools are supported as effectively as possible for the successful reopening of the schools. Principals and Deputy Principals have continued to attend regular online meetings regarding the management of the reopening of schools.

Additional Supports for Schools

The Department of Education published details on a new Covid Learning and Supports Scheme (CLASS) that will mitigate the impact to students' learning and wellbeing of Covid-19 closures and restrictions on Wednesday, 8 September 2021.

Under the scheme, every school will receive an allocation of additional teaching hours, which they may use in accordance with the needs of their students. This will enable schools to identify students most at risk of learning loss arising from the recent disrupted school experience and put in place specific targeted teaching supports to meet these students' needs.

Draft Admission Policy (DAP)

Draft Admission Policies (DAPs) are in the final stages of being approved. Principals are attending on-line meetings with the Director of Schools to finalise the Draft Admission Policy (DAP) documentation for

approval at Board of Management meetings in advance of 1 October 2021. All schools are required to publish their Admissions Policies and Admissions Notices by 1 October 2021 in accordance with the Education (Admission to Schools) Act, 2018.

Thomond Community College - Thomond Community College TY Students Awarded 'Limerick Person of the Month'

A group of students from the TY enterprise class at Thomond Community College in Limerick City have been named Limerick Person of the Month. The 'Limerick Person of the Year' awards are sponsored by the Limerick Leader, media agency Southern, and the Clayton Hotel, and they were set up to honour the achievements and success of local people both at home and abroad.

The students were chosen as this month's winners thanks to their entrepreneurial and philanthropic approach to their entry for the Limerick Student Enterprise Awards. The competition is run by the Local Enterprise Office Limerick and is open to all 2nd level students in Limerick schools. For their entry, the Thomond Community College students recognised the merits of developing their own school masks

Speaking about the students, Norma O'Brien, Principal of Thomond Community College, said: "I am so proud of the TY group who worked tirelessly all year and showed great community spirit with their wonderful donation to the residents at St Camillus."

Donn O'Sullivan, Editor with the Limerick Leader, also spoke about the student's award: "These young business leaders are an inspiration to us all. In the times we live in, it was fantastic to see these young people be so aware of others in their community and already, at this young age, they are changing lives. They are a credit to themselves, their families and to their school."

Newly Appointed Teachers Webinar

Limerick and Clare Education and Training Board will be hosting a webinar for all newly appointed teachers who commenced in its schools since September 2020 or September 2021 at a special on-line meeting. The purpose of this event is to provide you with an overview of Limerick and Clare Education and Training Board Schools Division and the support that is available to teachers across the ETB.

Supports for Schools

Schools will continue to be supported in the development of inclusive school practices for all including ongoing support of Special Education Needs Coordinators (SENCOs), Additional Education Needs Teams in schools, Student Support Teams, Transition Year Coordinators, Digital Leaders, Curriculum Leaders, Boards of Management, school leaders, teachers and Special Needs Assistants (SNAs).

The Professional Development schedule (below) has been developed to support our schools in accordance with comprehensive feedback from teachers and school leaders.

Training and Supports for schools

Support seminars and training are planned for post-primary personnel in the following areas;

- Student Support Team Coordinators online meeting
- Online meeting of Special Education Needs Advisory Group
- Online meeting of Risk Register and Safeguarding Advisory Group
- Leading Inclusive Learning, Teaching and Assessment (LILTA) online meeting
- Transition Year Coordinators

The support and resources made available by the Department of Education have been made available to our schools on a central hub on the Schools Division Support site - www.lcetbdrive.ie.

This also includes resources that the Director of Schools and the Support Team have created and developed.

Seminar for Parents & Guardians on Sleep

Limerick and Clare Education and Training Board has organised a special webinar for parents/guardians of children who attend our schools on the very important topic of the importance of sleep and how we can ensure that our children benefit from a good sleep routine.

Sleep plays a crucial role in helping us deal with the demands of life on every level. In this talk Tom Coleman will out why Sleep is important and how it interacts with aspects of our physical, emotional, and mental health.

Collaboration with University of Limerick School of Education

Schools Division will host a webinar for University of Limerick School of Education Fourth Year students prior to going out on school placement. The webinar, 'Teaching Through COVID 19: Schools Perspective' will provide an insight into the following areas for these student teachers;

- National Policy and Guidelines
- Health and safety considerations
- Changes to teaching, learning and assessment
- COVID 19 policies
- Supports for teachers

Limerick and Clare Education and Training Board YouthWork

Limerick and Clare Education and Training Board Summer Youth Work Programme Grant Scheme

The Youth Work team processed 19 applications with €22,000 allocated for the Summer Scheme this year - lots of activities were undertaken by youth groups and projects including, kayaking, water sports, circus skills & generally enjoying the outdoors as part of summer provision.

UBU Resilience and Effectiveness Initiative

In July the following projects were approved by the Department of Children, Equality, Disability, Integration and Youth (DCEDIY). The Youth Work team is delighted with the additional funding and it will be incorporated into the overall allocation for that funded organisation from 1 January 2022.

1. Limerick Youth Theatre €10,000
2. Foroige Loobagh € 15,000
3. Northside Family Resource Centre: €35,833

Capital Grant 2021

Following a further request to the Department, the Youth Work team is delighted to receive additional funding of €68,631.72. Our overall capital funding allocation 2021 is €194,966.72. 18 applications were successful and we look forward to working with groups to support the completion of their capital projects.

Site Visits

Over the summer months, the youth work team visited 'UBU your Place your Space' projects across the region, the site visit process is an integral part of the funding scheme and coordinators were delighted to observe the extraordinary work of the projects and their keen engagement with young people.

Covid-19 funding Scheme

This funding is part of an on-going scheme for 2021. Currently, the YouthTeam has supported nine project applications with €36,800 allocated (first round).

Local Creative Youth Partnership - LCYP

Limerick and Clare Education and Training Board was requested by the Department of Education to present to the newly added ETBs (Cork, Mayo Sligo and Galway and Roscommon ETBs) on its experience of leading Local Creative Youth Partnerships on Thursday 15 July 2021.

Overview Q1 – 3 and plans for Q4 2021

Spring and Summer Programme

The focus on outdoor events, together with the launch of a Strategic Plan saw the Local Creative Youth Partnership evolve to a new level of activity and engagement during summer 2021.

Activities

- Strategic Plan Launch
 - Summer Circus School, focus on wellness – 4 weeks during July 2021
 - Camán, Burren Excursions, focus on wellness – 5 days in July
 - Markets Field, Dance programme over four weeks in July
 - Radio/podcast and online drama with young people with a disability
 - Cruinniú na nÓg film projects, June 16
 - Storytelling in Early Education Settings
 - Dance programme with Early Years Educators
 - Call & Response
 - Trail of music and youth arts events
-
- Q4 Plans
 1. Future Film Makers, a training programme targeting Regeneration Communities in Limerick City. Delivered with industry partners.
 2. Early Years Programme to be evaluated with detailed plans for storytelling and dance programmes for 2022. In Partnership with childcare committees in both counties.
 3. Resume workshop programmes with Dóchas Midwest, Downs Syndrome Limerick and Downs Syndrome Clare.
 4. Call out to youth service providers for residency programme similar to 2020.
 5. Build on Call & Response, Markets Field dance and other established initiatives with planning and delivery in: Lisdoonvarna, Bruff, Abbeyfeale Kilmallock, Kilkee, Kilrush, Weston, Moyross/Ballynanty.

Call and Response

During September 2021, young people in Limerick and Clare are taking part in creative events in parks, marquees, handball alleys, and online as the Limerick and Clare Education and Training Board's Local Creative Youth Partnership launches its second festival of youth arts. These events will be carried out in compliance with public health guidelines.

FET Division



Full-Time Provision

PLC, Apprenticeship; Specific Skills Training, Youth Education & Training

PLC

LCFE Mulgrave St Campus, is actively recruiting for 2021/2022 intake of learners. Management and staff have undertaken all COVID-19 training and refresher course provided by the ETB. The Campus has updated its COVID-19 Response Plan and there are plans to run a number of Pathways to Apprenticeship courses for 2021/2022. The Campus is also running the Accounting Technician Apprenticeship and is considering running the Hairdressing Apprenticeship.

- LCFE Mulgrave St Campus Evening Programmes (onsite and online) are currently enrolling for the year 2021/2022.
- A number of Interactive Smart Panel TVs, upgraded visualisers and double monitors have been installed in the teaching rooms in order to enhance the delivery of courses. Staff are to be updated on changes to QA that needs to be implemented going forward.

Apprenticeships/Traineeships

- Shannon Campus is currently in talks with Irish Road Haulage Association with a view to offering the Heavy Goods Vehicle Traineeship in 2022.
- Shannon and Raheen are looking at a means to increase throughput of apprentices to help ease the national backlog.
- QQI validation for the new awards in F-Gas will take place this month. To date in 2021, over 350 people have been trained and received their QQI certification.
- A new course for Driving Instructors is being developed. This is to meet the increase in demand for driving tests.
- Shannon Campus, through contracted training, continue to offer a range of on-line courses during Covid-19.
- Raheen Campus is currently developing Surface Mount Technology Traineeship to facilitate training specialists for regional electronics manufacturing industries.

Specific Skills Training

National Learning Network Amber Flag Ceremony: Mayor of Limerick City and County Daniel Butler raised the 4th Amber Flag at National Learning Network's Centre in Raheen on 3rd September in recognition of their work in promoting positive mental health and wellness among learners and staff. Some learners who availed of extensions to training time with LCETB have now progressed to higher training both within and outside NLN.

Outdoor Education and Training Centres

Both the OETC Kilfinane, and the OETC The Burren, were successful in receiving Sports Capital Equipment Grants to the value of €22,690 and €15,812 respectively. The grant received by OETC Kilfinane, will enable the purchase of additional electronic Orienteering equipment and replacement of Mountain Biking and Rock-Climbing equipment. The grant received by OETC The Burren, will enable the purchase of a Mobile Watersports Unit. In addition, OETC Kilfinane, took ownership of a new 17 seater minibus to support the ongoing outdoor education and training activities in County Limerick.

OETC Kilfinane, are delighted to announce a partnership with Lough Gur Visitor Centre for a new initiative, the Discover Lough Gur Kayaking Experience. This latest initiative offers a great opportunity to explore the beauty and tranquillity of Lough Gur from the water by Kayak. Paddling in Sit-on-Top Kayaks this activity includes an active Kayak session with a journey of the lake led by experienced Kayak Instructors. There has been a great response to date for this course and extra dates have been added to meet demand. Booking and information for all our courses is available online at www.kilfinaneoec.com

Music Generation

- MGCE in partnership with Creative Youth Ireland ran a series of art and music workshops for teenagers at the Michael Cusack Centre in Carron and the OETC The Burren, on each Thursday in July. They were well attended and enjoyed by all.
- Music enrichment summer camps also took place for national school children in Ennis, Kilrush, Killaloe & Shannon throughout July. They were a huge success and some participants have now enrolled in MGCE's instrumental hubs starting in September.
- A series of Creative Hub workshops took place for teenagers in Kilrush and Ennistymon period in June 2021. Participants engaged in creative music making & produced a song which they performed for parents at the end of the two weeks.

Youthreach

Learner Mentoring Initiative(LMI)

Funding has been secured to expand the range of supports traditionally available through the Special Education Needs Initiative (SENI) from the existing three Youthreach Provision 'SEN' Centres based in Further Education and Training Campuses in West Clare, Hospital and O'Connell Ave., to the remaining five Youthreach Provision centres based in Further Education and Training Campuses in Kilmallock Road, Moyross, East Clare, Shanagolden and Ennis.

The LMI is supported by the AISS fund and the Professional Development Support Service. New LMI Resource staff have been appointed across the five 'new' LMI centres and the next phase of building centre capacity and resource development is scheduled to be completed by December 2021. The completion of the roll-out of this initiative will ensure that the ETB is delivering a high-quality Further Education and Training LMI integrated service in its eight ETB Youthreach Provision centres, involving 100 staff and 267 learners.

Youthreach- KRC Campus: The focus of efforts has been to prepare for the full return to onsite learning. Particular actions include ensuring the site is ready for a safe return of learners, induction and registration of new learners on FETCH and PLSS and addressing gaps in staff in consultation with line manager/ HR, etc.

FAI, KRC: Five learners have been offered scholarships to study in the USA. Two learners have started in Connecticut and Texas. Two Learners will go to Massachusetts and one is in New Mexico. Of these five, two are from marginalised communities in the City. There have been visa issues due to Covid-19 restrictions and centre staff are supporting these learners in getting all necessary paperwork completed.

An Assistant Coordinator has been appointed. This Co-ordinator holds a degree from Carlow IT, a UEFA B Coaching Licence and his employment history includes time spent in athletic development and in management positions in the sport and leisure industry. This Co-ordinator is a former Limerick FC player with over fifteen years of experience in professional football, including three years spent in the Arsenal FC Academy in England.

Youthreach – Ennis Campus: The centre has received AISS funding for ten additional places.

Youthreach - Shanagolden Campus: Leaving Certificate Applied results 2021, excellent result from seven learners: three distinctions, three merits and a pass. The centre coordinator wishes to acknowledge this

great achievement of Shanagolden Youthreach learners and also to express appreciation to the staff team for the support given to learners given the challenging learning environment since the initial lockdown.

Youthreach - Hospital Campus: As part of the summer programme learners from Youthreach worked on the design and construction of an outdoor sensory garden with staff of Bohermore National School to particularly enhance the Additional Needs Provision in the school. Learners gained valuable work experience in the area of Woodwork, Horticulture and Art and Design.

Hospitality & Tourism

Hospitality Campus has achieved the following accreditation "Recognition of Quality Culinary Education, World Association of Chefs Societies". Limerick and Clare ETB is the first ETB and the second college in Ireland to receive this accreditation. This puts the Hospitality Campus in the international arena with colleges in Asia, Australia and the USA. The Hospitality Campus has an international platform and will be engaging with international colleagues and learners.

Part-Time Provision

Community Education & Training

- Planning for the resumption of onsite delivery by up to 18 community groups across Limerick City is underway.
- Promotional material including a Community Education brochure and the traditional postcard (this year using images from the Self-Portrait project) have been produced for distribution.
- Community Education is collaborating with Family Learning on an Irish project to support parents with using Irish phrases with their children. One school in Limerick City and two in Clare are participating in the project.

Support Services

Active Inclusion

- A Community Education Facilitator has been appointed to manage the ongoing development of the Learning Hub Network, which facilitates a range of learner supports across eight FET Campuses
- Limerick and Clare Education and Training Board have completed the Assessment phase of the public sector duty project and are putting an organisation wide structure in place to manage the Address and Report phases
- Limerick and Clare ETB are represented on the ETBI Active Inclusion working Group which has overseen the research and development of an Active Inclusion Position Paper for the FET Sector. The position paper is currently in draft format and will be released in Autumn.

Enterprise Engagement

- Ongoing developments with local Artisan Food Groups to meet the upskilling needs of employers and employees in this industry
- In conjunction with the Communications and Marketing team the creation and distribution of an STA e-newsletter to industry in the region
- Ongoing developments with the Aviation Industry to meet the upskilling and reskilling needs for their employees
- Information, Recruitment & Guidance Support Service
- Guidance Counsellor Support: Meetings with Skills to Advance Groups for Career Guidance Support
- Ongoing developments with Guidance for Schools Programme 2021/2022 initiative.
- Ongoing developments of webinars re PLC programmes, traineeships and apprenticeships to schools and partnerships.



Capital and Procurement

At any one-time Limerick and Clare Education and Training Board is managing an extensive range of capital projects regionally through the building and refurbishment of schools and centres and nationally as lead on the retrofit project for schools. As one project is completed another takes its place. Over the lifetime of the projects the cumulative economic value of the projects is over €100 million euro. This has an ongoing significant impact on the economic life of the region providing much needed investment and employment as well as enhancing regional infrastructure.

Major Capital Projects

Coláiste Chiaráin, Croom	New School
Ennis Community College, Ennis	Stand-alone Extension with PE Hall
Ennistymon Vocational School	New School Development
St Anne's Community College, Killaloe	Stand-alone Extension with PE Hall
Coláiste Iósaef, Kilmallock	Extension
Gaelcholaiste Luimnigh	New Build - Clare Street
Mungret Community College	Phase 5 Temporary Accommodation
Mungret Community College	New Post Primary School for 1000 Students
Thomond Community College	ASD Unit
Glenroe Community National School	School Refurbishment
St. John Bosco CC., Kildysart	Additional School Accommodation
Mol an Óige CNS	New School
Raheen Woods CNS	New School

Capital Projects (Regional)

School/Centre	Description
Sacred Heart National School, Monaleen	Development of a new 2 storey Classroom School Building with SNU
Gaelscoil Donncha Rua, Shannon, Co. Clare	New school
Gaelscoil Sheoirse Clancy	Major Refurbishment
Killinure NS, Co. Limerick	Extension to existing school
Gaelscoil Mhichil Ciosog	Construction of 7 Mainstream Classrooms and PE Hall
Salesian Secondary School, Pallaskenry	Extension to existing school
St. Mary's National School Limerick	Refurbishment of Existing School
St. Brigids National School, Limerick	Extension to existing school plus SEN Accommodation from September 2021
St. Clements College, Laurel Hill Ave, South Circular Road, Limerick	Additional Accommodation SEN Facility

St Patricks Comprehensive School, Shannon Gaelscoil Uí Choimín	Additional Accommodation SEN Facility New School with SEN facility
General Works	
St. John Bosco CC, Kilmihil Community College: Coláiste Na Trocaire Coláiste na Trocaire Desmond College Thomond Community College	Fire Upgrade Works Partial Replacement of Windows Staff Toilet Upgrade Electrical Upgrade-External Lighting Fire Upgrade Works Emergency Lighting Upgrade Works
Sports Capital Works	
Colaiste Mhuire, Askeaton, St. Michaels Community College, Kilmihill Coláiste Na Trocaire Rathkeale 2017 Scariff Community College - Sports Capital Coláiste Na Trocaire Rathkeale 2018	Astroturf Pitch Upgrade of Athletics Track New PE Facilities Resurfacing of existing sand track New PE Facilities
Other Projects	
Burren OEC Limerick Training Centre Raheen FET - O Connell Avenue (Lift) FET - LCFE (Digital & Media Centre) FET - KRC (Addit. Classrooms & Learning Hub) FET - Raheen (Campus Masterplan) FET - Raheen (Relocation of Construction Rooms) FET - Abbeyfeale FET - Newcastlewest (New Campus) FET (Clonroad)	Window Installation Electrical Workshop Refurbishment DT appointed DT to be appointed DT to be appointed Consultant to be appointed DT to be appointed DT to be appointed DT to be appointed Additional space required for Electrical Apprenticeships) DT to be appointed Consultant to be appointed
FET (Scarriff) FET (Conditional Surveys - Campus Wide) FET & Schools (Campus Wide) – Works Contractors Framework to be established	To assist in the faster selection and appointment of contractors
FET (Conditional Surveys - Campus Wide) Design Consultancy Framework to be established	To assist in the faster selection and appointment of consultants and where applicable direct drawdown to be used
Further Education and Training - Hospital Campus Further Education and Training- Campus Croom LCFE LCFE LCFE	Roof Replacement and variation Demolition of Pre-fabs Refurbishment Internal & External Painting Heating Upgrade Phase 2
Energy	
SEAI	LCETB are fully compliant with our Energy Monitoring and Reporting
National Pilot Energy Efficiencies in Schools 2020	LCETB co-ordinated this national pilot project with DES and SEAI focusing on energy retrofits in 6 schools throughout the country
National Pilot Energy Efficiencies in Schools 2021	There are a further 6 schools on the 2021 project including Coláiste Iosaef, Kilmallock

Cllr. Elena Secas congratulated the Limerick and Clare Education and Training Board’s College of Further Education and Training Hospitality Campus which has just been announced as an accredited college with the World Association of Chefs Societies. Limerick and Clare Education and Training Board’s College of Further Education and Training Hospitality Campus has been announced as an accredited college with the World Association of Chefs Societies within its Global Education Network. This makes it the first ETB college in Ireland to achieve this prestigious accreditation alongside one other education provider with the award. This recognition of quality culinary education is yet another accolade for the college, which became the first centre in the Republic of Ireland to be awarded with a consecutive European Framework for Quality Management (EFQM) Centre of Excellence Award last July.

8. For Adoption;

a. Finance Report

Adopted on the proposal of Cllr. Gabriel Keating, seconded by Cllr. Clare Colleran Molloy.

The Board was briefed that at a recent Audit & Risk Committee meeting, Members noted from the 2019 C&AG Audit Report that LCETB was incurring negative interest charges with the bank and requested that other opportunities regarding investment be looked at. Under the Education and Training Board Act 2013, an ETB can invest money with the NTMA. Initial discussions regarding same have taken place with the NTMA. Funding received from the DE or SOLAS will be lodged with the NTMA. This process will be managed by the Finance Department.

Permission from the Board to invest in Central Treasury Notes with NTMA is required, and Board approval for the completion of the Customer Mandate lodgement of funds with the NTMA is also required. On the proposal of Cllr. Clare Colleran Molloy, seconded by Cllr. Elena Secas, this was approved by the Board.

b. Amended Annual Report 2020

The Director briefed Members on the changes as directed by the Department of Education and the amended Annual Report was adopted on the proposal of Cllr. Clare Colleran Molloy, seconded by Cllr. Liam Galvin.

9. For Approval;

a. Charities Regulation Code and Compliance Record Form

On the proposal of Cllr. Elena Secas, seconded by Cllr. Clare Colleran Molloy and following presentation on the code by the Director of Organisation Support and Development, Ms. Shelagh Graham, the Code was adopted.

b. LCETB Procurement Policy

Adopted on the proposal of Cllr. Clare Colleran Molloy, seconded by Mr. Donal ÓhAiniféin.

c. Property Items Proposed;

<i>Location</i>	<i>Use</i>	<i>Type</i>
Clonroad FET Campus	Electrical workshops	New lease
Clonroad FET Campus	Healthcare training unit and offices	Variation to existing lease
Ennis Community College	Playing Pitch	License Agreement
Ennistymon Vocational School	Classroom	Extension to existing lease

Gaelcholáiste Luimnigh Absolute Hotel	Classroom	Extension to existing license
Gaelcholáiste Luimnigh, Neville House	School Building	Variation to existing lease
Glenroe Community National School	National School	New lease
LCFE FET Campus, Mulgrave Street	Digital Media Hub	Purchase
Mungret Community College	Site for new school	Purchase
Scariff FET Campus	Classroom	New rental

Adopted on the proposal of Cllr. Clare Colleran Molloy, seconded by Cllr. Gabriel Keating.


AOB

The Chief Executive and Board paid tribute to everyone who participated in the recent Olympic Games and in particular to the students, present and past and staff who participated.

Next Meeting: Tuesday, 16th November, 2021, at 4 p.m.

George O'Callaghan
Chief Executive.

Signed:



 Chairperson of Meeting held on 16th November, 2021