



Bord Oideachais & Oiliúna  
**LUIMNIGH & AN CHLÁIR**  
**LIMERICK & CLARE**  
Education & Training Board

**COLLEGE OF FURTHER  
EDUCATION & TRAINING**

---

# INFORMATION FOR POST-PRIMARY SCHOOLS

on Pathways to  
Further Education and Training (FET)  
Initiatives





# Contents

FOREWORD .....	4
INTRODUCTION .....	6
WHAT FET CAN OFFER .....	7
AIM .....	7
SUPPORTS FOR LEARNERS IN FET .....	8
FINANCIAL ASSISTANCE .....	8
ENTERPRISE ENGAGEMENT SUPPORT SERVICE .....	9
Guidance Industry Briefings .....	9
PATHWAYS COURSE OPTIONS CURRENTLY AVAILABLE .....	9
GENERAL PATHWAYS .....	10
English as An Additional Language Classes (EAL) .....	10
Leaving Certificate Maths Support Classes .....	10
Pathways for Members of the Traveller and Roma Community .....	11
SECTORAL-SPECIFIC PATHWAYS .....	11
Barista Skills .....	11
Culinary Skills .....	12
Outdoor Education .....	12
PATHWAYS TO APPRENTICESHIP .....	13
Digital Engineering and Manufacture - Computer-Aided Engineering .....	13
Digital Engineering and Manufacture – Robotics .....	13
Digital Engineering and Manufacture – Programmable Logic Controllers (PLCs) .....	14
Digital Engineering and Manufacture – Pneumatics .....	14
Digital Engineering and Manufacture – Digital Electronics .....	14

Renewable Energy .....	15
Nearly Zero Energy Building (NZEB) Fundamental Awareness .....	15
NZEB Retrofit Thermal Insulation .....	15
Metal Fabrication Skills .....	16
Introduction to Plumbing .....	16
Electrical Skills .....	16
Introduction to Digital Engineering .....	17
Introduction to Aircraft Maintenance .....	17
<b>PATHWAYS TASTER WORKSHOPS .....</b>	<b>18</b>
Beauty Therapy .....	18
Sports, Exercise and Recreation .....	18
Creative Media and Visual Arts .....	19
Hairdressing .....	19
Motor Technology .....	20
Construction Skills .....	20
Acting for Stage and Screen .....	21
Nursing Support and Healthcare Support .....	21
Information Technology .....	21
<b>PATHWAY SHOWCASE EVENTS .....</b>	<b>22</b>
Explore Engineering .....	22
Women in STEM .....	22
Apprenticeship Careers Showcase .....	22
<b>TRANSITIONAL PATHWAYS .....</b>	<b>23</b>
Settling into Secondary School .....	23
Understanding Project Maths .....	23
<b>HOW DOES MY SCHOOL GET INVOLVED? .....</b>	<b>24</b>
Contact Details .....	24
Role of the School .....	24
Registration & Parental Consent .....	25
Learner Code of Conduct .....	25
Photography/ Video Recording Consent Form .....	25
Course Evaluation and Feedback .....	25



# FOREWORD

The importance of embracing equality, diversity, and inclusion (EDI) and encouraging the progression of target groups such as Travellers, Roma, migrants, refugees, DEIS learners, 'first generation scholars', lone parents, mature students, students with disabilities and students from disadvantaged geographical areas is a priority for Limerick and Clare Education and Training Board through its College of Further Education and Training (College of FET) Pathways Provision.

Equity in access, inclusion, and success for all in education and training is a basic principle of education and training, but achieving this is still a challenge for EU education and training systems, with significant differences between and within Member States<sup>1</sup>. This has been reflected in the SOLAS FET Strategy<sup>2</sup> where Fostering Inclusion is one of the three Strategic Priorities, along with Building Skills and Creating Pathways.

As a College of FET, our focus is on the development of targeted and/or individualised provisions for learners requiring additional attention and support in inclusive settings (such as learners from a socio-economically disadvantaged, migrant, refugee, Traveller and Roma background, those with visible and non-visible disabilities, those with special educational needs or mental health issues, and those living in isolated or remote areas).

---

<sup>1</sup> [https://eur-lex.europa.eu/legal-content/EN/TXT/PDF/?uri=CELEX:52021XG0610\(01\)](https://eur-lex.europa.eu/legal-content/EN/TXT/PDF/?uri=CELEX:52021XG0610(01))

<sup>2</sup> [https://www.solas.ie/f/70398/x/64d0718c9e/solas\\_fet\\_strategy\\_web.pdf](https://www.solas.ie/f/70398/x/64d0718c9e/solas_fet_strategy_web.pdf)

Our approach to developing Pathways from School to FET is based on structured co-operation between actors representing different policy areas, levels of governance and education and training levels.

*Since diversity and disparities continue to increase in today's society, education and training policy has a prime role to play in preventing discrimination and fostering inclusion, integration and respect for diversity in the European Union. Therefore, education and training systems need to be shaped in order to ensure that all groups and individuals have effective equal access to quality learning opportunities and are enabled to successfully complete their education or training path.<sup>3</sup>*

A European Commission Council Recommendation on 'Pathways to School Success', adopted by EU Member States on 28 November 2022, recommended that member states:

*Increase the flexibility and permeability of educational pathways, for example by modularising courses, offering vocationally-oriented courses, or promoting flexibility as regards duration and entry points. Facilitate transitions between levels and types of education and training and between school and future employment, including through recognition and validation arrangements, career guidance delivered by qualified practitioners, and active collaboration with stakeholders.<sup>4</sup>*

In developing our Framework on Pathways from School to FET, we are very aware of the requirement to focus on supporting the inclusion of post-primary students who might otherwise not progress into either Further or Higher Education and/ or employment. We look forward to engaging with you positively and welcome suggestions and feedback in respect of the development of our Pathways from School to FET Initiatives.

---

<sup>3</sup> [https://eur-lex.europa.eu/legal-content/EN/TXT/PDF/?uri=CELEX:52021XG0610\(01\)](https://eur-lex.europa.eu/legal-content/EN/TXT/PDF/?uri=CELEX:52021XG0610(01))

<sup>4</sup> [https://eur-lex.europa.eu/legal-content/EN/TXT/PDF/?uri=CELEX:32022H1209\(01\)&from=EN](https://eur-lex.europa.eu/legal-content/EN/TXT/PDF/?uri=CELEX:32022H1209(01)&from=EN)





# INTRODUCTION

This information pack brings together necessary information for principals, deputy principals, school completion co-ordinators, home school community liaison and guidance counsellors about the offering available for post-primary learners through the College of FET.

Our 'Pathways Programmes' are a part of Limerick and Clare Education and Training Board's College of FET and are funded by SOLAS, the national body which funds, co-ordinates and monitors Further Education and Training provision in Ireland.

The ETB offers an extensive choice of full and part-time programmes through its multi-campus College of FET at 28 campus locations as well as over 300 participating community locations across the Limerick and Clare region every year. The range of programmes includes Full and Part-Time options, Apprenticeships, Traineeships, Hospitality Education and Training, Local Training Initiatives, Specialist Training Provision, Youth Provision (including Youthreach in College of FET campuses and Community Training Centres), Vocational and Employee Skills Development, Community Education, Literacy Services and Evening Courses.

The national FET Strategy (2020 – 2024) identifies creating pathways as one of the three strategic priorities for the FET sector in Ireland. FET programmes and courses focus on experiential learning, alongside the acquisition of knowledge, skills, and competency development. As part of the College of FET, the provision of structured pathways and transitioning opportunities for post-primary students to participate in and experience FET is a priority.



# WHAT FET CAN OFFER

Lack of exposure to vocational learning, and vocational options or pathways during the Junior and Senior Cycle means that many students are unaware of the opportunities open to them. International approaches suggest a potential role for FET in offering modules and tasters of vocational courses to second-level students where existing curriculum requires access to sectoral-specific technical equipment and guidelines.

This may include offering QQI Level 5 and Level 6 modules as an integrated part of the Senior Cycle alongside other options and components. The potential for apprenticeship taster offerings as part of Transition Year is also currently being tested with some schools, where a month of the TY will be dedicated to this purpose. There are many fantastic FET and apprenticeship ambassadors who can talk about their own experiences and provide inspiration and insight.

## AIM

The Pathways from School to FET programme within the College of FET aims to:

- Provide a unique opportunity for students and teaching staffs to engage in active learning in a FET or similar setting;
- Enable, support, and encourage students participating to see career pathways from school to FET and onwards;
- Increase awareness and participation in FET;
- Promote linkages with post-primary education, training, and employment opportunities.



# SUPPORTS FOR LEARNERS IN FET

Our goal is to ensure that, as far as is reasonably possible, all learners are provided with the supports required to allow them to fully participate and benefit from the educational opportunities available while participating in a course offered by Limerick and Clare Education and Training Board's College of FET. Once registered on a course, FET learners can avail of a range of supports if they require:

- Learning support or reasonable examination accommodations due to a diagnosed disability, an on-going physical or mental health condition, or a learning difficulty;
- Access to computers or technology to help them to participate in their chosen course;
- Tutorial support with reading, writing, maths, study skills, computer skills and in improving English language skills;
- Access career or educational advice and information and access to the learner counselling service (over 18's only);
- Access to ESOL (English for Speakers of Other Languages) Assessments and ESOL (English for Speakers of Other Languages) Educational Programmes.

To avail of our support during their course, learners need to register with the College of FET Learner Support Service <https://collegeoffet.ie/learner-supports/>. This can be done in conjunction with the guidance counsellor or course co-ordinator.

## FINANCIAL ASSISTANCE

For school leavers considering engaging with a Further Education and Training option, eligible learners pay no tuition fees while the College of FET also provides financial help to learners on certain courses. This can help towards maintenance costs, travel, and study expenses. Learners may be eligible for one of the following options – SUSI Grant, Training Allowance, or, if they are over 21 and in receipt of a qualifying social welfare option, the Back to Education Allowance.



# ENTERPRISE ENGAGEMENT SUPPORT SERVICE

The Enterprise Engagement Support Service describes a range of activities, initiatives and approaches that target employers, employees, sectoral industry organisations, education and training providers, as well as social enterprises in communities. The aim is to promote and foster mutually-beneficial partnerships, resulting in positive outcomes for current and future FET learners.

## Guidance Industry Briefings:

The Enterprise Engagement Support Service is involved with the co-ordination of annual Guidance Counsellor Industry Briefings. Industry briefings with both post-primary school students and guidance counsellors are conducted online and face-to-face. Recent engagement with Regeneron and Analog Devices resulted in attendance by over 30 guidance counsellors and a review of the pathways from Further Education and Higher Education to industry. Focus groups with Guidance Counsellors, a new incentive, set up in late 2022 will enable ease of access to information between developments within FET and Guidance Counsellors.

Email: [sarah.noonan@lccetb.ie](mailto:sarah.noonan@lccetb.ie)

Tel: 061 578 100

# PATHWAYS COURSE OPTIONS CURRENTLY AVAILABLE

The opportunities available are constantly being reviewed in response to emerging needs and ongoing discussions with our colleagues in the Post-Primary School Sector. Some of the options currently available include:

- General Pathways Programmes
- Sectoral-Specific Pathways Programmes
- Pathways to Apprenticeship Programmes
- Taster Workshop Pathways
- Enterprise Engagement Support Services for Schools
- Showcase Events supporting Pathways



# GENERAL PATHWAYS

## English as An Additional Language Classes (EAL)

**Class Size:** 12

**Location:** In your school / Nearest CFET campus

**Certification:** N/A

**Duration:** September – May

A comprehensive English language programme which focuses on building reading, writing, listening, and speaking skills. The main aim of this EAL programme is to provide targeted support to learners with limited English proficiency. By improving their English language skills learners will be better equipped to succeed academically and socially. We use the Common European Framework of Reference for Languages (CEFR) which is the international standard for describing language ability. Learners are taught very practical English to understand the workings of their school and in consultation with their mainstream teachers, they are taught subject-specific vocabulary and grammar to pre-prepare them for their other classes. Learners are guaranteed a minimum of one hour per week in small groups.

**Email:** [barbra.nzvaura@lcetb.ie](mailto:barbra.nzvaura@lcetb.ie)

**Tel:** 086 011 2734

## Leaving Certificate Maths Support Classes

**Class Size:** 12

**Location:** CFET Kilmallock Road Campus, Limerick City /  
In your school

**Certification:** N/A

**Duration:** September – May

Our fully-funded Leaving Certificate Maths Support Classes aim to provide additional maths support to help learners achieve success in their Ordinary or Higher-Level maths exam. Leaving Certificate students, Apprentices and Further Education and Training learners in need of support are welcome to join the support class. We aim to help learners understand Maths and excel in their exams. All levels and abilities are welcome.

**Email:** [barbra.nzvaura@lcetb.ie](mailto:barbra.nzvaura@lcetb.ie)

**Tel:** 086 011 2734

**Email:** [zoe.averell@lcetb.ie](mailto:zoe.averell@lcetb.ie)

**Tel:** 061 578 100

## Pathways for Members of the Traveller and Roma Community

Our Active Inclusion Support Service (AISS) includes an adult educator dedicated to increasing engagement in Further Education and Training (FET) with the Irish Traveller and Roma communities. Both these communities have a high rate of early school leavers. Therefore, under this service you can request information sessions for individuals or small groups, in Junior or Senior Cycle on the opportunities available to them in FET. Based on their interests, tours and tasters can be arranged at our CFET campuses across Limerick and Clare.

Email: [fionnuala.daffy@lcbetb.ie](mailto:fionnuala.daffy@lcbetb.ie)

Tel: 086 084 3164



## SECTORAL-SPECIFIC PATHWAYS

### Barista Skills

**Class Size: 12**

**Location: CFET Ennis Campus and Kilmallock Road Campus, Limerick City**

**Certification: City & Guilds  
Level 2 Diploma**

**Duration: 8 weeks**

This 1-day per week course provides the practical skills and knowledge required to work in a busy café environment. Participants gain an understanding of the coffee bean journey, from sourcing to grinding. They will develop skills in milk handling, latte art, the coffee grinding process, and customer service. At the end of each course, students will complete a duo of exams, both theory and practical, to obtain a City & Guilds Level 2 Certificate in Barista Skills.

Email: [vivienne. Kearney@lcbetb.ie](mailto:vivienne. Kearney@lcbetb.ie)

Tel: 061 400 660

## Culinary Skills

**Class Size: 12**

**Location: CFET Hospitality Campus, Limerick City**

**Certification:**

**Duration:**

The Junior Chef 'Apprenticeship Taster' course is run by a team of professional executive chefs from our CFET Hospitality Campus and the Panel of Chefs of Ireland. The taster course culminates in a competition specifically for Transition Year students – the Shannon Region Junior Chef of the Year. One student is selected to represent their school in the grand final and will be judged in a professional industrial kitchen by the Panel of Chefs Ireland. Students choose local fresh produce and cook it in a professional kitchen with an eye on healthy eating, especially food that supports good mental health for life.

**Email: [vivienne.kearney@lcetb.ie](mailto:vivienne.kearney@lcetb.ie)**

**Tel: 061 400 660**

## Outdoor Education

**Class Size: 12**

**Location: Outdoor Education and Training Centres  
Kilfinane / The Burren, Co Limerick / Co Clare**

**Certification: N/A**

**Duration: 3 Days**

Take your learning outside of the classroom with our Outdoor Education and Training Centres. The aim of our outdoor education courses is for students to develop skills in adventure sports, basic instruction skills and explore potential careers in outdoor education. Students will learn basic skills in rock climbing, kayaking, mountain biking and navigations skills. Students are collected each morning by ETB minibuses and dropped back at circa 3.30pm, or in time for school buses. Courses take place in January, February, March, November, and December.

**Email: Outdoor Education and  
Training Centre Kilfinane**

**[kilfinaneoetc@lcetb.ie](mailto:kilfinaneoetc@lcetb.ie)  
Tel: 063 911 61**

**Outdoor Education and  
Training Centre The Burren**

**[burrenoec@lcetb.ie](mailto:burrenoec@lcetb.ie)  
Tel: 065 707 8066**



# PATHWAYS TO APPRENTICESHIP

## Digital Engineering and Manufacture – Computer-Aided Engineering

**Class Size: 8**

**Location: CFET Raheen Campus, Limerick City**

**Certification: City & Guilds**

**Duration: 2 weeks**

The aim of this programme is to provide learners with an opportunity to become familiar with the design and manufacture of engineering parts using Computer-Aided Design (CAD) software and Computerised Numeric Control (CNC) equipment programming and operation.

**E-mail: [fetraheen@lcbetb.ie](mailto:fetraheen@lcbetb.ie)**

**Tel: 061 487 900**

## Digital Engineering and Manufacture – Robotics

**Class Size: 8**

**Location: CFET Raheen Campus, Limerick City**

**Certification: City & Guilds**

**Duration: 2 weeks**

The aim of this programme is to provide learners with an opportunity to become familiar with the programming and safe operation of industrial robots.

**E-mail: [fetraheen@lcbetb.ie](mailto:fetraheen@lcbetb.ie)**

**Tel: 061 487 900**

## Digital Engineering and Manufacture – Programmable Logic Controllers (PLCs)

**Class Size: 8**

**Location: CFET Raheen Campus, Limerick City**

**Certification: City & Guilds**

**Duration: 2 weeks**

The aim of this programme is to provide learners with an opportunity to become familiar with the programming and safe operation of Programmable Logic Controllers. PLCs communicate, monitor and control automated processes like assembly lines, machine functions, or robotic devices and are widely used in factory automation.

**E-mail: [fetraheen@lcbetb.ie](mailto:fetraheen@lcbetb.ie)**

**Tel: 061 487 900**

## Digital Engineering and Manufacture – Pneumatics

**Class Size: 8**

**Location: CFET Raheen Campus, Limerick City**

**Certification: City & Guilds**

**Duration: 2 weeks**

The aim of this programme is to provide learners with an opportunity to become familiar with the design and construction of pneumatic circuits, widely used in the automation of factory processes.

**E-mail: [fetraheen@lcbetb.ie](mailto:fetraheen@lcbetb.ie)**

**Tel: 061 487 900**

## Digital Engineering and Manufacture – Digital Electronics

**Class Size: 8**

**Location: CFET Raheen Campus, Limerick City**

**Certification: City & Guilds**

**Duration: 2 weeks**

The aim of this programme is to provide learners with an opportunity to become familiar in a project environment, with basic digital electronic components and circuits.

**E-mail: [fetraheen@lcbetb.ie](mailto:fetraheen@lcbetb.ie)**

**Tel: 061 487 900**

## Renewable Energy

**Class Size: 8**

**Location: CFET Raheen Campus, Limerick City**

**Certification: N/A**

**Duration: 2 Weeks**

The aim of this programme is to provide learners with an opportunity to become familiar in a project environment, with an understanding of Renewable Energy and the links between engineering and wind energy. Learners will design, assemble, and construct a small-scale functional wind turbine.

**E-mail: fetraheen@lcetb.ie**

**Tel: 061 487 900**

## Nearly Zero Energy Building (NZEB) Fundamental Awareness

**Class Size: 14**

**Location: CFET Raheen Campus, Limerick City**

**Certification: City & Guilds**

**Duration: 1 day**

The aim of this programme is to provide learners with the knowledge in the general principles and practices of Nearly Zero Energy Building (NZEB).

**E-mail: fetraheen@lcetb.ie**

**Tel: 061 487 900**

## NZEB Retrofit Thermal Insulation

**Class Size: 14**

**Location: CFET Retrofitting Centre of Excellence,  
Roxboro, Limerick City**

**Certification: City & Guilds**

**Duration: 2 Weeks**

This programme module aims to equip the learner with the knowledge, skills, and competence to select and safely install a range of insulation and draught proofing systems in the construction environment.

**E-mail: fetraheen@lcetb.ie**

**Tel: 061 487 900**



## **Metal Fabrication Skills**

**Class Size: 8**

**Location: CFET Shannon Campus, Co Clare**

**Certification: Engineering  
Workshop Processes**

**Duration: 2 weeks**

The aim of this taster course is to provide learners with the experience of learning and using some of the processes used in metal fabrication. These include manual metal arc welding, MIG welding, CNC plasma cutting, design processes, scrollwork, manufacture and the associated required health and safety theory.

**Email: [james.power@lcetb.ie](mailto:james.power@lcetb.ie)**

**Tel: 061 706 100**

## **Introduction to Plumbing**

**Class Size: 8**

**Location: CFET Shannon Campus, Co Clare**

**Certification: N/A**

**Duration: 2 weeks**

The aim of this taster course is to provide learners with the experience of learning and using some of the processes used in plumbing. These include copper pipe work and bending exercises, soft and hard soldering techniques, oxy-acetylene welding, radiator and basic plumbing exercises and the associated required health and safety theory.

**Email: [james.power@lcetb.ie](mailto:james.power@lcetb.ie)**

**Tel: 061 706 100**

## **Electrical Skills**

**Class Size: 8**

**Location: CFET Shannon Campus, Co Clare**

**Certification: N/A**

**Duration: 2 weeks**

The aim of this taster course is to provide learners with the experience of learning and using some of the skills and electrical circuits used by electricians. These include, one-way, two-way, and intermediate light circuits, PIR-controlled floodlighting, socket circuits, basic domestic circuits and the associated required health and safety theory. Learners will not at any stage have access to electric current.

**Email: [james.power@lcetb.ie](mailto:james.power@lcetb.ie)**

**Tel: 061 706 100**

## Introduction to Digital Engineering

**Class Size: 4**

**Location: CFET Shannon Campus, Co Clare**

**Certification: Engineering  
Design Awareness**

**Duration: 2 weeks**

The aim of this taster course is to provide learners with the experience of learning and using some digital engineering processes. These include component design using CAD Fusion, Illustrator, file conversion, 3D printing (single and dual-colour) and vacuum forming and the associated required health and safety theory.

**Email: [james.power@lcetb.ie](mailto:james.power@lcetb.ie)**

**Tel: 061 706 100**

## Introduction to Aircraft Maintenance

**Class Size: 8**

**Location: CFET Shannon Campus, Co Clare**

**Certification: N/A**

**Duration: 1 week**

The aim of this taster course is to provide learners with the experience of learning and using some aircraft maintenance techniques. These include component identification, removal, and installation, for aircraft gas turbine engine and helicopter, sheet metal repair techniques and the associated required health and safety theory. Local aircraft maintenance companies will be invited to discuss aviation maintenance as a career option..

**Email: [james.power@lcetb.ie](mailto:james.power@lcetb.ie)**

**Tel: 061 706 100**





# PATHWAYS TASTER WORKSHOPS

## Beauty Therapy

**Class Size: 8**

**Location: CFET Mulgrave Street Campus, Limerick City**

**Certification: N/A**

**Duration: 1 Day**

This introductory workshop provides learners with an understanding of the Beauty Department and the different job roles within this sector. A basic introduction to beauty therapy workshop will give learners an insight into eyelash extension application, introduction to hand treatments, basic principles of skin analysis and customer service.

**Email: [zoe.averell@lcbt.ie](mailto:zoe.averell@lcbt.ie)**

**Tel: 061 414 344**

---

**Class Size: 12**

**Location: In your school / Nearest CFET campus**

**Certification: N/A**

**Duration: 4 Weeks**

This taster course gives learners a basic understanding of the working of a beauty salon. Learners will have the opportunity to try their hand at a range of mini facials, makeup, and understand the fundamentals of skincare. Learners will also explore the basic processes of nail care.

**Email: [barbra.nzvaura@lcbt.ie](mailto:barbra.nzvaura@lcbt.ie)**

**Tel: 086 011 2734**

## Sports, Exercise and Recreation

**Class Size: 18**

**Location: CFET Kilmallock Road Campus, Limerick City**

**Certification: N/A**

**Duration: 1 Day**

An introductory workshop created to provide an understanding of the Sports Department and the range of aspects available to study. A basic introduction to our Sports and Recreation courses with an insight into areas such as basic health and wellbeing, nutrition, sports psychology, training, dealing with a concussion and dealing with stress.

**Email: [zoe.averell@lcbt.ie](mailto:zoe.averell@lcbt.ie)**

**Tel: 061 414 344**

## Creative Media and Visual Arts

**Class Size: 25**

**Location: CFET Mulgrave Street Campus, Limerick City**

**Certification:**

**Duration: 1 Day**

This introductory workshop has been created to provide students with an insight into the various media disciplines within the Department of Creative Media. Learners will learn about the creative processes in Photography, TV & Film, Music Production, Radio Production, Multimedia, Animation, Game Design, and Acting for Digital Media.

**Email: zoe.averell@lcbtb.ie**

**Tel: 061 414 344**

## Hairdressing

**Class Size: 12**

**Location: CFET Ennis Campus and Raheen Campus, Limerick City**

**Certification: City & Guilds**

**Duration: 2 Weeks**

This introductory course gives learners the opportunity to experience hairdressing in a real salon. Learners will get the chance to shampoo and perform a conditioning treatment on each other, as well as style long hair using all the tools and equipment used in a commercial salon. This practical, fun-filled, and hands-on experience gives learners an insight into our National Hairdressing Apprenticeship programme which is the first nationally-recognised hairdressing qualification in Ireland.

**Email: barbra.nzvaura@lcbtb.ie**

**Tel: 086 011 2734**

**Email: fetraheen@lcbtb.ie**

**Tel: 061 487 900**

---

**Class Size: 8**

**Location: CFET Mulgrave Street Campus, Limerick City**

**Certification: N/A**

**Duration: 1 Day**

This introductory workshop has been created to provide an understanding of the Pathways to Hairdressing course and the different job roles within this sector. A basic introduction to our hairdressing courses with areas such as career choices available, salon health and safety, practical demonstrations, and activities..

**Email: zoe.averell@lcbtb.ie**

**Tel: 061 414 344**

## Motor Technology

**Class Size: 8**

**Location: CFET Hospital Campus, Co Limerick**

**Certification: N/A**

**Duration: 2 Weeks**

This programme provides learners with the foundation required to pursue an apprenticeship in the motor trades. It is the ideal starting point to explore the various apprenticeship options available. Learners will gain hands-on experience in working on engines in a garage environment.

**E-mail: [fetraheen@lcbtb.ie](mailto:fetraheen@lcbtb.ie)**

**Tel: 061 487 900**

## Construction Skills

**Class Size: 8**

**Location: CFET Raheen Campus, Limerick City**

**Certification: N/A**

**Duration: 2 Weeks**

This programme provides learners with the foundation required to pursue an apprenticeship in the building trades. It is the ideal starting point to explore the various apprenticeship options available. Learners will gain hands-on experience in carpentry, block laying and electrical installation.

**E-mail: [fetraheen@lcbtb.ie](mailto:fetraheen@lcbtb.ie)**

**Tel: 061 487 900**



## Acting for Stage and Screen

**Class Size: 25**

**Location: CFET Mulgrave Street Campus, Limerick City**

**Certification: N/A**

**Duration: 1 Day**

This introductory workshop has been created to provide students with an insight into the various disciplines required for acting for both stage and screen. Learners will look at storytelling, characterisation, ensemble work, vocal technique, and movement.

**Email: [zoe.averell@lcbtb.ie](mailto:zoe.averell@lcbtb.ie)**

**Tel: 061 414 344**

## Nursing Support and Healthcare Support

**Class Size: 20**

**Location: CFET Mulgrave Street Campus, Limerick City**

**Certification: N/A**

**Duration: 1 Day**

This introductory workshop has been created to provide students with an insight into the Nursing Studies QQI award. Students will learn about the practical skills involved in working in a Healthcare setting e.g., hand hygiene, use of PPE, monitoring and recording vital signs. It will give students an understanding of a career in Nursing and other Healthcare disciplines.

**Email: [zoe.averell@lcbtb.ie](mailto:zoe.averell@lcbtb.ie)**

**Tel: 061 414 344**

## Information Technology

**Class Size: 12**

**Location: CFET Mulgrave Street Campus, Limerick City**

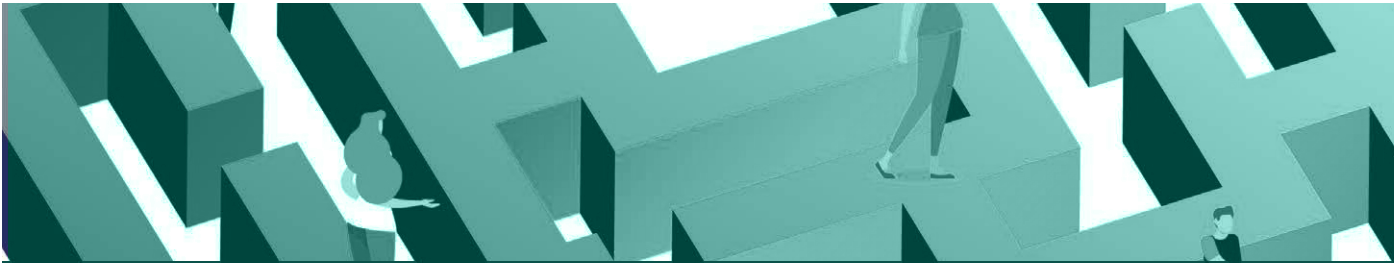
**Certification: N/A**

**Duration: 1 Day**

This introductory workshop has been created to provide students with an insight into the various IT disciplines within the campus' Department of IT and Creative Media. Learners will explore the creative processes of Games Design, problem solving using Coding and hands-on learning with a Computer Network.

**Email: [zoe.averell@lcbtb.ie](mailto:zoe.averell@lcbtb.ie)**

**Tel: 061 414 344**



# PATHWAY SHOWCASE EVENTS

## Explore Engineering

Explore Engineering is an industry-led initiative, which has the support of education and training providers in the region. It covers the entire Mid-West region.

The primary goal of Explore Engineering is to increase the quality and quantity of engineering talent (apprentices, technicians, and engineers) available in the region.

Working with education and training providers ensures that there are pathways for everyone wanting to enter the engineering sector. The annual showcase is a key event to highlight the array of opportunities within the sector.

**Email:** [sarah.noonan@lcteb.ie](mailto:sarah.noonan@lcteb.ie)

**Tel:** 061 578 100

## Women in STEM

The Coding for Women initiative is a 12-month immersive course in full-stack software development, followed by a three-month work placement with IT companies in the Limerick and Clare region. The initiative is part of a partnership between Limerick and Clare ETB, Code Institute, and the Mid-West Regional Skills Forum in response to the development of STEM programmes specific to women in the IT sector.

**Email:** [eimear.brophy@lcteb.ie](mailto:eimear.brophy@lcteb.ie)

**Tel:** 087 274 5768

## Apprenticeship Careers Showcase

The Enterprise Engagement Support Service assists with the coordination, organisation, and promotion of the Apprenticeship Careers Showcase which runs annually over two days in Mid-November. The event attracts in excess of 2,500 people and gives students, teachers, guidance counsellors and parents from across the region interested in learning more about apprenticeships the opportunity to engage with educators, instructors and employers on the many exciting options available. The showcase with multiple interactive zones is organised by Limerick and Clare Education and Training Board and the Mid-West Regional Skills Forum, and supported by the National Apprenticeship Office.

**Email:** [lysinda.kirby@lcteb.ie](mailto:lysinda.kirby@lcteb.ie)

**Tel:** 086 067 5793



# TRANSITIONAL PATHWAYS

Family Learning is a part of Further Education and Training. We aim to work in partnership with local schools, libraries, family resource centres and community organisations to offer a range of exciting learning opportunities to families across the Limerick and Clare region. Our free courses are a great way to support caregivers to support their child's learning and development at home.

## Settling into Secondary School

**Class Size:** 12

**Location:** In your school / Nearest CFET campus

**Certification:** N/A

**Duration:** 1 Day

The transition from primary to secondary can be a stressful event for all students and their parents. This course offers support on how to settle your child into second level school and to make this transition a positive experience for you and your child. This course explores areas such as managing change, being organised, favourite subjects, observing differences, extending vocabulary and ways to help with homework and being safe online.

## Understanding Project Maths

'Project Maths' is the name given to the maths syllabus currently in use in secondary schools in Ireland. This six-week course gives details on how maths links to the everyday world, how to read maths questions, see how relevant each maths topic area is to real life.

### Family Learning in Limerick

**Email:** [mary.dunne@lcetb.ie](mailto:mary.dunne@lcetb.ie)

**Tel:** 061 445 700

### Family Learning in Co Clare

**Email:** [mary.flanagan@lcetb.ie](mailto:mary.flanagan@lcetb.ie)

**Tel:** 065 707 8066



# HOW DOES MY SCHOOL GET INVOLVED?

## Contact Details

Contact details for the Pathways Provision you are interested in are available under the relevant heading and include an email address and a telephone number for initial enquiries. If your query is more general, or is in relation to a Pathways proposal not currently included in our offering, please contact Barbra Nzvaura by email at [barbra.nzvaura@lcetb.ie](mailto:barbra.nzvaura@lcetb.ie) or by phone on (086) 011 2734

## Role of the School

Getting involved in a FET Pathways Programme can offer great opportunities for students to gain practical skills and experience in vocational training. If your school is interested in participating in a programme, there are several steps to take. Once you have identified a suitable programme for your students, you can reach out to the course co-ordinator who will provide information about the programme and the supports available to your school. The school will need to send a teacher or a member of staff with the group in a supervisory capacity. Transport and lunch may be included for your chosen course, this will be discussed with the course co-ordinator during your initial enquiry.



## Registration & Parental Consent

In order for learners to participate in a pathways programme, learners must register for their specific course through the FET courses hub - <https://www.fetchcourses.ie>. Each course is given a unique code that identifies it. With the assistance of the teacher, students must create an account on FETCH and record personal details such as PPSN and date of birth. Teachers will be provided with the course code in advance to help learners apply for the course. A signed parental consent form is also required for persons under 18 years of age and must be submitted prior to course commencement.

## Learner Code of Conduct

We want your students to enjoy their time with us. We expect all students to behave in a manner that helps to create a positive and safe learning environment. All students participating on pathways programmes have an obligation to:

- Support learning
- Promote safety
- Respect property, personal space and privacy of one another
- Model compassion and respect

Students must refrain from engaging in any in-person or digital communication that is considered to be:

- Interfering with the learning and working of others
- Bullying, harassing, intimidating, discriminating or violence
- Unsafe or illegal, including the possession, use or distribution of illegal or restricted substances

If a student is not adhering to the code of behaviour, the FET tutor will work with the teacher to decide on whether to inform parents or take the student back into class.

## Photography/ Video Recording Consent Form

Limerick and Clare Education and Training Board will take photographs or videos during our programmes. These images/videos may be used for documentation purposes and publicity purposes such as print media, ETB social media channels and website. If you DO NOT CONSENT to your school to take part in photography/ video recording for documentation and publicity purposes, please email the course co-ordinator with your preference.

## Course Evaluation and Feedback

At Limerick and Clare Education and Training Board we are committed to providing the highest standards of service delivery. Therefore, we welcome your views in writing, by phone, by e-mail or in person on our Pathways offering.





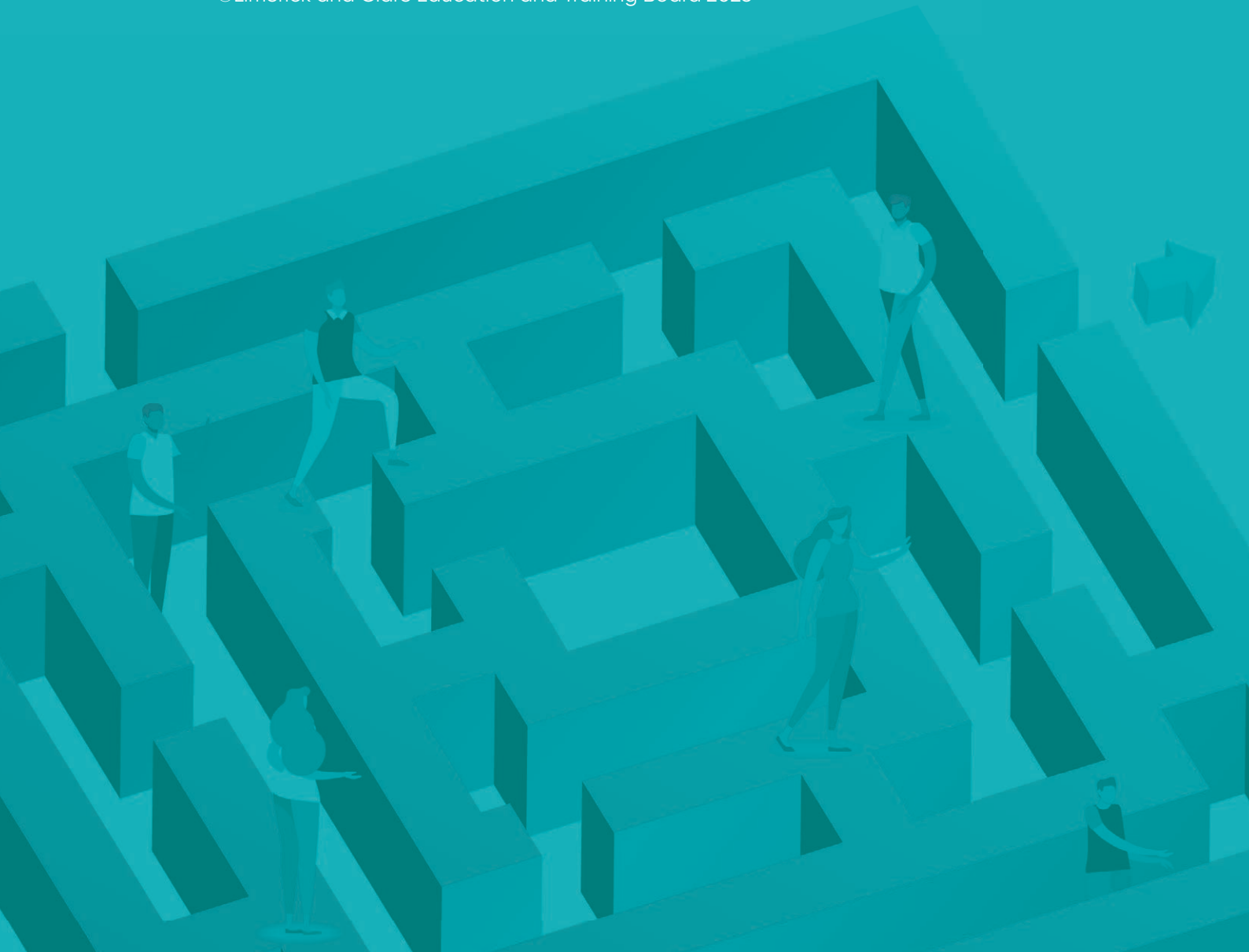
Bord Oideachais & Oiliúna  
**LUIMNIGH & AN CHLÁIR**  
**LIMERICK & CLARE**  
Education & Training Board

# COLLEGE OF FURTHER EDUCATION & TRAINING

Further Education and Training Division  
Limerick and Clare Education and Training Board

FET@lcefb.ie  
collegeofFET.ie

©Limerick and Clare Education and Training Board 2023



Programmes co-funded by the Government of Ireland and the European Union.



**Rialtas na hÉireann**  
Government of Ireland



Có-mhainithe ag an  
Aontas Eorpach  
Co-funded by the  
European Union